



POWERFUL
+ SMART =
EFFECTIVE

LiNX™



dynamic™
AN Allied Motion COMPANY



POWERFUL

The power to conquer the day, every day. LiNX delivers sustained power throughout driving and additional boost to get your power wheelchair up and over obstacles. Proven reliability and patented control algorithms deliver consistent performance over the lifetime of your power wheelchair, with best-in-class power for controlling seating actuators.

DLX-PM120AL-A



UP TO
120A

Powerful drive control with smart algorithms that balance changes in motor resistance over their lifetime.

DLX-ACT400-A

UP TO
18A

All LiNX actuator ports deliver smooth proportional control up to 18 A.





SMART

Seamless end-to-end solutions that enhance business intelligence, enable smarter clinical interaction and make it easy for users to interact with personal electronic devices.

Smart design

Deliver your entire power wheelchair product portfolio with one seamless system and create custom extensions through our development interface. Smart sensors add control to drive and seating functions.

Smart follow up

Partner with Dynamic to build informatics into your customer support processes to provide remote diagnostics and real-world usage data. Data locks protect personal and business confidentiality.

Smart assessment & setup

Eliminate the need for complex programming when trying highly flexible input and output options, saving precious clinical evaluation time. Easily add speciality control inputs and outputs in the field to precisely fit individual needs. Modules are automatically recognised and appropriate parameters loaded to ensure optimal performance.

Smart connections

Connect and interact with multiple personal electronic devices and easily switch between using them. Connect to, and control app-based smart home systems through the power wheelchair remote.





EFFECTIVE

Be more productive throughout your business cycles and give your customers better solutions in less time. LiNX is the only seamless end-to-end system that can support cost-sensitive, drive-only power wheelchairs through to systems with advanced seating, alternative controls and connectivity. Using a single product system increases productivity throughout design, launch and support of your products.



Create

Rapidly find the right system combination, responsiveness and feel to bring your designs to life. Choose from a wide selection of standard remotes, or partner with Dynamic to explore custom solutions. A third-party interface allows for customised interfaces, remotes or even actuator modules with development support from expert integration engineers.



Develop

Designed and robustly tested to global standards, LiNX is ready for integration, testing and release.



Launch!

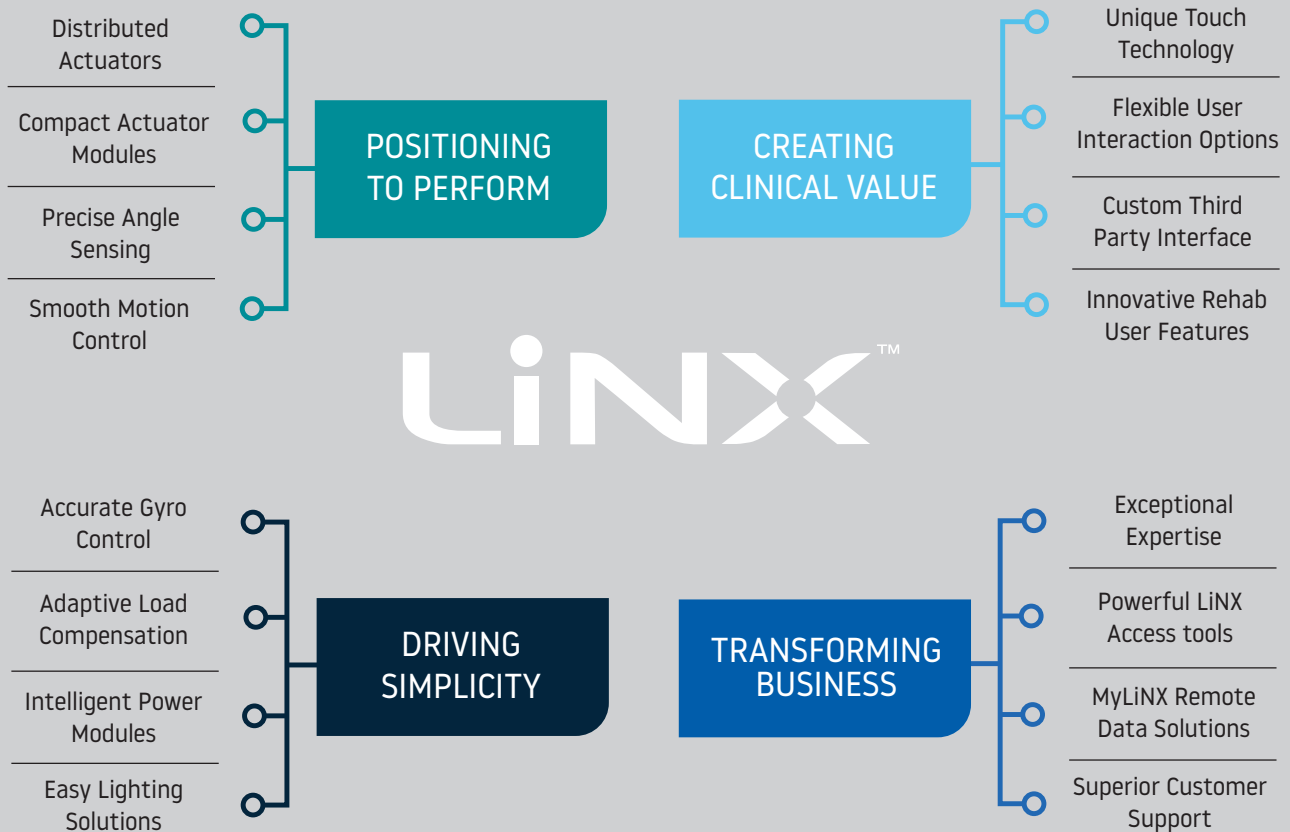
LiNX has high promotional impact with appealing aesthetics, touch interaction and wireless, graphical programming. Consistent user interface design and common programming toolsets make LiNX easy to train and support during the important launch and rollout phases. Plug'n'Go technology streamlines setup so users can quickly get accurate and reliable control and performance from their mobility device.



Grow & Sustain

LiNX Access programming tools allow easy field upgrades and automatically stay up to date with the latest firmware and software releases. Proven product reliability minimises business disruption and common parts ease stock level holding, forecasting and aftermarket service.

ONE SYSTEM. ENDLESS POSSIBILITY.



**MAKE YOUR MARK
WITH LiNX™**

Your brand is important. Partner with Dynamic to personalise or create custom solutions that reflect your brand values and personality. Explore what the seamless LiNX system can do for your brand and business.



POSITIONING TO PERFORM

Power wheelchair users need to move and position their bodies to maintain flexibility and comfort. LiNX can also flex to tailor solutions that meet the exact needs of different users and market segments. Create simple and cost-effective solutions using built in actuator ports or expand with actuator modules to add more functionality to position users, and your business, for optimum performance.

Sit Smarter with LiNX Memory Positions

LiNX combines angle sensing technology with actuator control algorithms to automatically take users to a stored seating position. Users have the ability to update these stored seating positions as well as monitor the seating angle in real-time. LiNX Memory Positions are a standard feature and do not require additional modules or firmware.

Powerful distributed actuator control

LiNX actuator controls are distributed between power modules and separate actuator module options. With up to 18 amp available from any actuator port in the system, LiNX gives you the power to perform. Build simple “two-box” solutions with the two actuator ports in the power modules or expand for more functionality by adding actuator modules. Enjoy fully configurable ports and seating functions, including soft start and finish for smoother movement.



Intelligent seating functions

LiNX automatically discovers what actuators are available and loads the seating functions that can be supported. Plug in an actuator to an assigned port and the system automatically updates the menu to show new functions that are available without requiring programming in the field.

Smart and smooth

LiNX seating functionality gives users very smooth proportional control of their positioning. Smart and accurate sensors in actuator modules, or as separate plug-in sensors, let manufacturers safely design for both a range of motions and stability.

Easy to understand and use

LiNX 200 level remotes have very clear to see displays and simple to use controls. Many users love the intuitive analogue-style dials and simple buttons. Inhibits or lockouts are clearly displayed on the remote as they occur so users can easily understand how seating positions affect drive or other seating functions.

Choose how to use

LiNX seating functions can be selected and controlled through joystick remotes, 10-switch panels or external switches. You can also add external on/off switches to systems through the IN200 module. Upgrade any system to enhance your drive experience with Gyro, or add USB charging to power personal electronics.



DLX-IN200-A



DLX-ACT200-A



DLX-TILT200-A

CREATING CLINICAL VALUE

Get the most out of the day

Illness or injury can reduce the time and energy users have for activities that are important to them. LiNX precisely fits users' needs and interaction styles to increase confidence and participation. Choose either a joystick-based remote or a standalone display in combination with input or output modules that interface with aftermarket speciality controls. Highly configurable touchscreens along with light-touch joysticks, dials and buttons create exceptional usability.

Promote better outcomes with LiNX Memory Positions

Clinicians can use this functionality to create customised positions for ease of use, comfort, and health of their clients. Memory Positions are a fast and easy way to activate complex body positioning. This is especially useful where clients may not frequently adopt these postures as it takes too long to adjust each actuator, or because they lack the confidence to use more angled postures.



DLX-REM400-B



DLX-REM500-A

Plug'n'Go performance

LiNX technology eliminates the need for programming when adding or removing different options - just Plug'n'Go. When needed, LiNX Access tools give incredible control over programming settings to ensure an advanced clinical fit using our revolutionary live wireless updates.

Superior speciality control support

LiNX completely redeveloped speciality control features that are vital for high-needs users. Menu and grid scanning, proportional veer algorithms, audible cues and advanced latched drive features are just a few features designed to make big differences for those with limited input abilities.

Programmable toggles

Unique optional toggles for the REM400 can be fitted aftermarket and customised to place on/off, speed, or menu selection controls exactly where users need them to be.



DLX-CR400-A



DLX-OUT500-A



DLX-IN500-A

A hand is shown interacting with a smartphone that is mounted on a black joystick controller. The phone's screen displays a user interface with a green bar at the top, a clock showing 13:37, and a circular gauge with a needle pointing to 0.0. The background is a dark, textured surface.

A TOUCH OF GENIUS!

Touchscreen interaction is everywhere.
Together with users, we made it
accessible.

Zero-force touch

Zero force touchscreens benefit users with very low strength, or reduced range of motion or accuracy. Working with users, we developed different interaction styles; choose from Tap or Swipe, set your display for left- or right-hand use and activate Glove Mode for use with splints and supports.

Light-touch

Prefer buttons and dials? LiNX delivers the right balance between tactile feedback and ease of use for buttons, dials, and joysticks.

Go touch-free

Not all users can physically interact with their remotes. LiNX lets you go touch-free with a range of menu scanning and speciality control options.

Get in touch

Connect and interact with multiple personal electronic devices and easily switch between using them. Use built in Bluetooth to connect to apps on your phone, tablet or PC that get you online or control smart home systems.

UNIQUELY YOURS

Support multiple power wheelchair configurations from just one file and sort the user's menu into any order that they like – that's unique to LiNX!

Function – A function operates a drive, seating or connectivity feature.

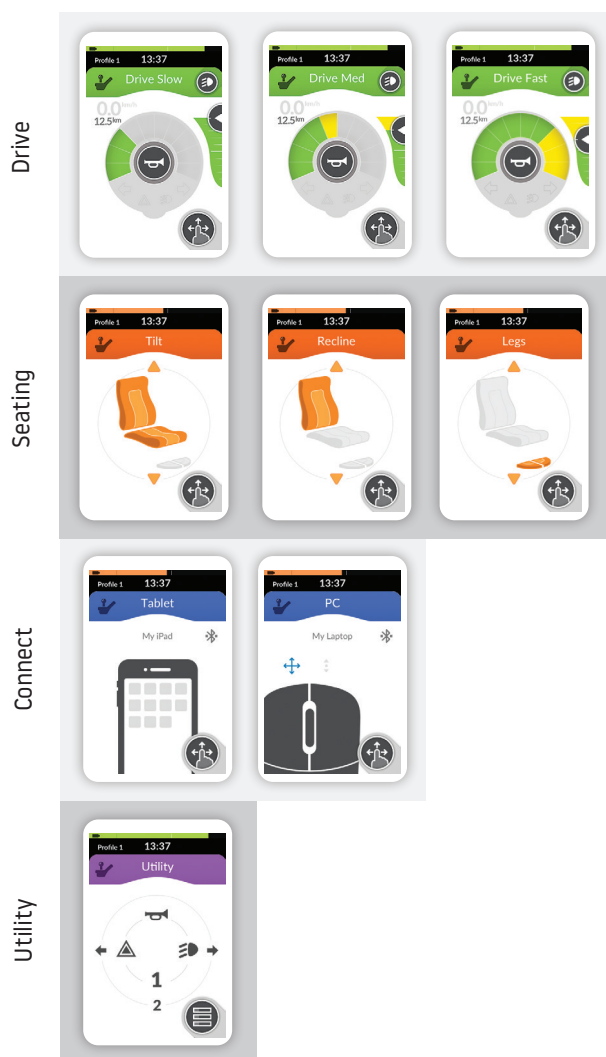
Profiles – A 'folder' that can have any mix of drive, seating or connectivity functions.

Configurations – Manufacturer settings that apply to different power wheelchair versions

You hold the cards

Think of your LiNX system like a deck of cards; the full pack of cards is the configuration, the functions are like suites, and a profile is like the hand you are holding.

Thematic



Mix'n'Match





ACHIEVE AMAZING EVERY DAY.

Being free to move and express yourself is central to the human experience. Dynamic exists to ensure that all people living with restricted mobility enjoy the same freedoms. We partner with innovative customers to bring freedom of movement and expression through high quality medical mobility control and high-tech connectivity.

Open new worlds

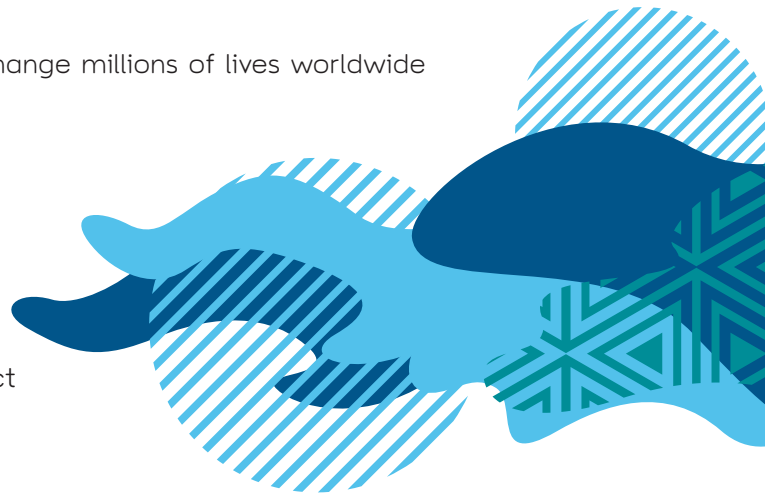
Mobility solutions powered by Dynamic change millions of lives worldwide every day.

Transform your business

Seamless product systems can transform your designs and your business.

Empower better outcomes

Clinicians, retailers and clients can interact more effectively to improve outcomes.



Talk to us about how
Dynamic can help
transform your business
and the lives of your
customers.

Dynamic is a company of Allied Motion Technology who jointly develop, manufacture and sell products for the motion control market. These products include brushed and brushless DC motors, brushless servo and torque motors, coreless DC motors, integrated brushless motor drives, gear motors, gearboxes, modular digital servo drives, motion controllers, incremental and absolute optical encoders and related motion control products.

alliedmotion.com

EUROPE

Ph: +44-1562-826-600
eusales@dynamiccontrols.com

ASIA

Ph: +886-955-335-243
asiasales@dynamiccontrols.com

AUSTRALASIA

(CORPORATE OFFICE)
Ph: +64-3-962-2519
sales@dynamiccontrols.com

Dynamic Controls is the world's leading manufacturer of electronic controls for power wheelchairs and scooters.
Actual products may vary from those featured. Not all products may be available at the time of printing.

QMS Certified to ISO 13485

The Bluetooth® word mark and logos are registered trademarks owned by Bluetooth® SIG, Inc.

